

“F” Fissured™



10

Year Availability
132

HRC

High Recycled Content



“F” FISSURED Panels/
DONN CENTRICITEE DXT Suspension System

LEED Credits
Recycled Content: 71%

MR				EQ		
Waste Reduction ¹	Recycled Content	Regional Materials ²	Rapidly Renewable Materials	Low-Emitting Materials	Daylight and Views	Acoustical Performance
●	●	●	●	●	●	●

Features and Benefits

- Cast product with durable surface that resists scrapes commonly caused by accessing the ceiling plenum
- Combine 12"x12" tile with the DONN® brand DX®/DXL™ concealed suspension system to create a nearly monolithic ceiling surface

Applications

- Administrative offices
- Schools
- Financial institutions
- Religious buildings

Substrate

- Cast mineral fiber



Medium-textured panel

To order samples, go to usg.com



White

"F" Fissured™

To order samples/literature:
 – Web: usg.com
 – E-mail: samplit@usg.com
 – Fax: 888.874.2348
 Technical Services: 800.USG.4YOU

Web Sites: usg.com
usgdesignstudio.com
sustainableceilings.com
seismicceilings.com

See usg.com for
 the most up-to-date
 product information.

UL Classified												
Edge	Panel Size	Class	Item No.	NRC	CAC Min.	LR ³	Color	Grid Options	VOC ⁶ Emissions	Abuse-Resistant	Recycled Content ⁴	Panel Cost
"F" FISSURED Panels	SQ 	2'x2'x3/4" Foil-Back	Class A	131	.70	35	.79	White	A, B, C	Zero	71% 	\$\$
		2'x4'x3/4" Foil-Back	Class A	135	.70	35	.79	White	A, B	Zero	71% 	\$\$
	SL 	2'x2'x3/4" Foil-Back	Class A	132	.70	35	.79	White	D	Zero	71% 	\$\$
		2'x4'x3/4" Foil-Back	Class A	136	.70	35	.79	White	D	Zero	71% 	\$\$
	FL 	2'x2'x3/4" Foil-Back	Class A	133	.70	35	.79	White	E, F, G, H	Zero	71% 	\$\$
		2'x4'x3/4" Foil-Back	Class A	133	.70	35	.79	White	E, F, G, H	Zero	71% 	\$\$
"F" FISSURED Tile ^{4,5}	BESK 	12"x12"x3/4"	Class A	102	.70	25	.79	White	I	Zero	71% 	\$\$\$\$
	SESK 	12"x12"x3/4"	Class A	101	.70	25	.79	White	J	Zero	71% 	\$\$\$\$

Legend

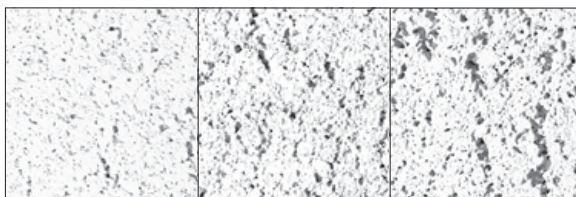
Zero Emissions (VOC Class)

Classified as zero-emitting per standards established by the Collaborative for High-Performance Schools (CHPS), following California Specification 01350 testing methods.

High Recycled Content

Classified as containing greater than 50% total recycled content. Total recycled content is based on product composition of post-consumer and pre-consumer (post-industrial) recycled content per FTC guidelines.

Grid Profile Options	A DX [®] /DXL™	B DXW™	C CENTRICITEE™ DXT	D DX/DXL	E CENTRICITEE DXT	F FINELINE [®] DXF	G FINELINE [®] 1/8 DXFF	H IDENTITEE™ DXI™	I DX [®] /DXL™ Concealed	J DX/DXL Concealed



Composite of "F" FISSURED ceiling products shows range to be expected in a production lot, and possibly in the same panel or tile. Ranges are random and cannot be specified. Texture appearance will vary based on ceiling height, installation methods, and natural variations of the product.

Physical Data/ Footnotes

Product literature
 Data sheet: SC1816

ASTM E1264 classification
 Type III, Form 4, Pattern D

ASTM E84 surface burning characteristics

Class A
 Flame spread: 25
 Smoke developed: 50

Weight
 1.75 lb./sq. ft.

Thermal resistance
 R-1.7

Maximum backloading
 See Warranty for details.

Maintenance

Can be cleaned easily with a soft brush or vacuum.

Texture

The manufacturing process for cast ceiling panels creates natural, subtle texture variations, which is a distinguishing feature of these products. Because of potential variances between production dates, we recommend ordering and installing cast products by production lot number.

Footnotes

1. Applies when USG acoustical ceilings recycling program is utilized.
2. For details, see LEED report generator at usgdesignstudio.com.
3. LR values are shown as averages.
4. Contact USG for adhesive recommendations for 12"x12" glue-up applications.
5. Not UL Classified for acoustics.
6. No formaldehyde is added to any ingredient or during the manufacturing process for all mineral fiber acoustical ceiling products manufactured by USG Interiors, Inc.



Manufactured by USG Interiors, Inc.
 550 West Adams Street
 Chicago, IL 60661

The following are trademarks of USG Interiors, Inc. or a related company: CENTRICITEE, *QIMA*PLUS, DONN, DX, DXF, DXFF, DXI, DXL, DXT, DXW, "F" FISSURED, FINELINE, IDENTITEE, USG.
 Safety First! Follow good safety/industrial hygiene practices during installation. Wear appropriate personal protective equipment. Read MSDS and literature before specification and installation.

SC1816/rev. 10-11
 © 2011, USG Interiors, Inc.
 Printed in U.S.A.